



Side Channel Blower Relief Valve

■ Application

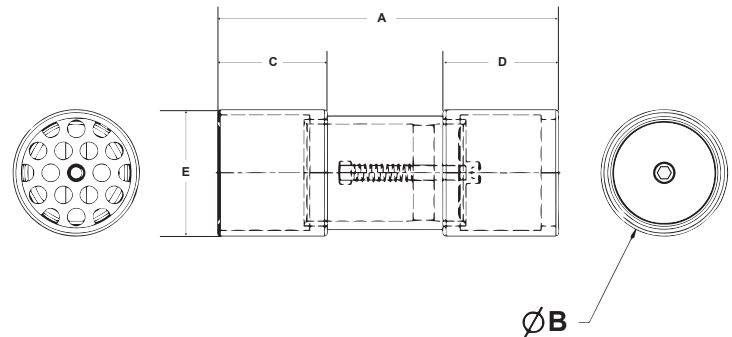
The Greenco Relief Valve is constructed of zinc-plated mild steel and is designed to protect blowers from overheating in a blocked-off mode during vacuum or pressure operation. Each valve can be set by the customer to the desired vacuum or pressure level. Commonly used in Regenerative, Positive Displacement Blowers and Vacuum Pumps.

■ Working Principle

The relief valve is installed on inlet or outlet of side channel blower .

- 1、 when the working pressure or pressure surge inside the blower is overload than the rated pressure of side channel blower , the relief valve will be open within 0.2 minutes , the overload pressure will be released from relief valve in order to protect the blower .
- 2、 when the working pressure reduces to safe value , the valve will be closed slowly, this will not cause the pressure surge again .
- 3、 The materials and specification of relief valve :
 - a、 Both inside and outside are steel.
 - b、 Can be used both pressure and vacuum.
 - c、 Connect thread suitable for PT,PF and NPT.

Dimensions



Selection & Data Sheet (inches)

Type	A	ØB	C	D	E
2BX4 141	155	54	51	52	G 1 ½
2BX4 142	187	70	60	63	G 2
2BX4 143	187	82	63	63	G 2 ½
2BX4 144	165	94	62	63	G 3
2BX4 145	165	94	62	63	G 4

Changes in particular the quoted performance curve, data and weights without prior notice. The figures are without obligations.

ZHEJIANG GREENCO INDUSTRY CO.,LTD

Tel: +86-576-86428999 Fax: +86-576-86409555

<http://www.greenco.cn>